

Operation Manual GB

Benutzerhandbuch D

Fonctions Détaillées F

Manual de Operaciones E

オペレーションマニュアル J

ADVANCED INTEGRATION USB STUDIO

CI 2



EN
DE
FR
ES
JA

 **steinberg**

FCC INFORMATION (U.S.A.)

1. IMPORTANT NOTICE:

DO NOT MODIFY THIS UNIT!

This product, when installed as indicated in the instructions contained in this manual, meets FCC requirements. Modifications not expressly approved by Yamaha may void your authority, granted by the FCC, to use the product.

2. IMPORTANT:

When connecting this product to accessories and/or another product use only high quality shielded cables. Cable/s supplied with this product MUST be used. Follow all installation instructions. Failure to follow instructions could void your FCC authorization to use this product in the USA.

3. NOTE:

This product has been tested and found to comply with the requirements listed in FCC Regulations, Part 15 for Class "B" digital devices. Compliance with these requirements provides a reasonable level of assurance that your use of this product in a residential environment will not result in harmful interference with other electronic devices. This equipment generates/uses radio frequencies and, if not installed and used according to the instructions found in the users manual, may cause interference harmful to the operation of other electronic devices. Compliance with FCC regulations does not guarantee that interference will not

occur in all installations. If this product is found to be the source of interference, which can be determined by turning the unit "OFF" and "ON", please try to eliminate the problem by using one of the following measures:

Relocate either this product or the device that is being affected by the interference.

Utilize power outlets that are on different branch (circuit breaker or fuse) circuits or install AC line filter/s.

In the case of radio or TV interference, relocate/reorient the antenna. If the antenna lead-in is 300 ohm ribbon lead, change the lead-in to co-axial type cable.

If these corrective measures do not produce satisfactory results, please contact the local retailer authorized to distribute this type of product. If you can not locate the appropriate retailer, please contact Yamaha Corporation of America, Electronic Service Division, 6600 Orangethorpe Ave, Buena Park, CA90620

The above statements apply ONLY to those products distributed by Yamaha Corporation of America or its subsidiaries.

* This applies only to products distributed by YAMAHA CORPORATION OF AMERICA.

(class B)

COMPLIANCE INFORMATION STATEMENT (DECLARATION OF CONFORMITY PROCEDURE)

Responsible Party : Yamaha Corporation of America
Address : 6600 Orangethorpe Ave., Buena Park, Calif. 90620
Telephone : 714-522-9011
Type of Equipment : ADVANCED INTEGRATION USB STUDIO
Model Name : CI2

This device complies with Part 15 of the FCC Rules.

Operation is subject to the following two conditions:

- 1) this device may not cause harmful interference, and
- 2) this device must accept any interference received including interference that may cause undesired operation.

See user manual instructions if interference to radio reception is suspected.

* This applies only to products distributed by YAMAHA CORPORATION OF AMERICA.

(FCC DoC)

이 기기는 가정용(B급) 전자파적합기기로서 주로 가정에서 사용하는 것을 목적으로 하며, 모든 지역에서 사용할 수 있습니다.

(class b korea)

PRECAUTIONS

PLEASE READ CAREFULLY BEFORE PROCEEDING

* Please keep this manual in a safe place for future reference.



WARNING

Always follow the basic precautions listed below to avoid the possibility of serious injury or even death from electrical shock, short-circuiting, damages, fire or other hazards. These precautions include, but are not limited to, the following:

Do not open

- Do not open the device or attempt to disassemble the internal parts or modify them in any way. The device contains no user-serviceable parts. If it should appear to be malfunctioning, discontinue use immediately and have it inspected by qualified Yamaha service personnel.

Water warning

- Do not expose the device to rain, use it near water or in damp or wet conditions, or place containers on it containing liquids which might spill into any openings. If any liquid such as water seeps into the device, unplug the USB cable from this device immediately. Then have the device inspected by qualified Yamaha service personnel.
- Never insert or remove a USB cable with wet hands.

Fire warning

- Do not put burning items, such as candles, on the unit. A burning item may fall over and cause a fire.



CAUTION

Always follow the basic precautions listed below to avoid the possibility of physical injury to you or others, or damage to the device or other property. These precautions include, but are not limited to, the following:

Location

- Do not expose the device to excessive dust or vibrations, or extreme cold or heat (such as in direct sunlight, near a heater, or in a car during the day) to prevent the possibility of panel disfiguration or damage to the internal components.
- Do not use the device in the vicinity of a TV, radio, stereo equipment, mobile phone, or other electric devices. Otherwise, the device, TV, or radio may generate noise.
- Do not place the device in an unstable position where it might accidentally fall over.
- Before moving the device, remove all connected cables.

Connections

- Before connecting the device to other electronic components, turn off the power for all components. Before turning the power on or off for all components, set all volume levels to minimum. Also, be sure to set the volumes of all components at their minimum levels and gradually raise the volume controls while playing the device to set the desired listening level.

Maintenance

- When cleaning the device, use a soft, dry cloth. Do not use paint thinners, solvents, cleaning fluids, or chemical-impregnated wiping cloths.

Handling caution

- When turning on the AC power in your audio system, always turn on monitor speakers LAST, to avoid speaker damage. When turning the power off, monitor speakers should be turned off FIRST for the same reason.
- Do not insert a finger or hand in any gaps on the device.
- Never insert or drop paper, metallic, or other objects into the gaps on the panel. If this happens, unplug the USB cable from this device immediately. Then have the device inspected by qualified Yamaha service personnel.
- Do not place vinyl, plastic or rubber objects on the device, since this might discolor the panel.
- Do not rest your weight on, or place heavy objects on the device, and do not use excessive force on the buttons, switches or connectors.
- Do not use the instrument/device or headphones for a long period of time at a high or uncomfortable volume level, since this can cause permanent hearing loss. If you experience any hearing loss or ringing in the ears, consult a physician.

Yamaha cannot be held responsible for damage caused by improper use or modifications to the device, or data that is lost or destroyed.

Always unplug the USB cable from a computer or turn off the computer to turn off the device when the device is not in use.

SPECIAL NOTICES

- This manual is the exclusive copyrights of Yamaha Corporation.
- Copying of the software or reproduction of this manual in whole or in part by any means is expressly forbidden without the written consent of the manufacturer.
- Yamaha Corporation makes no representations or warranties with regard to the use of the software and documentation and cannot be held responsible for the results of the use of this manual and the software.
- This disk containing the software is not meant for use with an audio/visual system (CD player, DVD player, etc.). Do not attempt to use the disk on equipment other than a computer.
- Future upgrades of application and system software and any changes in specifications and functions will be announced separately.
- The screen displays as illustrated in this manual are for instructional purposes, and may appear somewhat different from the screens which appear on your computer.
- Steinberg and Cubase are the registered trademarks of Steinberg Media Technologies GmbH.
- This product incorporates and bundles computer programs and contents in which Steinberg Media Technologies GmbH and Yamaha Corporation owns copyrights or with respect to which it has license to use others' copyrights. Such copyrighted materials include, without limitation, all computer software, style files, MIDI files, WAVE data, musical scores and sound recordings. Any unauthorized use of such programs and contents outside of personal use is not permitted under relevant laws. Any violation of copyright has legal consequences. DON'T MAKE, DISTRIBUTE OR USE ILLEGAL COPIES.
- Copying of the commercially available musical data including but not limited to MIDI data and/or audio data is strictly prohibited except for your personal use.
- Windows is a registered trademark of Microsoft® Corporation in the United States and other countries.
- Apple, Mac and Macintosh are trademarks of Apple Inc., registered in the U.S. and other countries.
- The company names and product names in this manual are the trademarks or registered trademarks of their respective companies.

Contents

Introduction	6
Features.....	6
Package Contents	6
About the Included Disks	7
About the power supply.....	7
 Software Installation	 8
Installing Cubase AI.....	8
Installing TOOLS for CI2.....	8
 The Controls and Connectors	 12
Front Panel.....	12
Rear Panel	16
 Connecting to an External Device	 17
Connection Examples	17
Options.....	17
 Try it out	 18
Preparing for using the CI2 with Cubase.....	18
Recording.....	19
Editing	21
 Troubleshooting	 22
 Uninstalling the TOOLS for CI2	 24
 Appendix	 26
Input and Output Specifications.....	26
General Specifications.....	26

Introduction

Thank you for your purchase of the ADVANCED INTEGRATION USB STUDIO CI2. Using Cubase, the CI2 is a highly intuitive, indispensable aid in recording, editing and sound shaping. Simply connect the CI2 to your computer via USB, and you've got a comprehensive control center and seamless environment for complete music production with Cubase.

Please read the Operation Manual (this book) so that you can take full advantage of its superlative features and enjoy trouble-free operation for years to come. Also keep it in a safe place for future reference.

Features

■ USB bus-powered

The CI2 can be simply connected to a USB terminal on your computer and can operate on USB bus power.

■ Phantom power (+48V) can be used

Phantom power can be supplied to two analog input jacks (XLR type).

■ Compatible with Core Audio (Mac OS X) and ASIO/WDM (Windows)

Using with a Core Audio/ASIO compatible DAW software application such as Cubase helps to reduce latency (sound delay).

■ Cubase AI DAW Software Supplied

Cubase AI software, included in this package, offers versatile, high-performance hard-disk recording capability.

■ Quick access to Cubase with the Browse mode

The Browse mode helps to create new projects and new tracks quickly on Cubase.

■ Quick recording with the Interactive Recording function

With the [Action Pad] button (or an optional Yamaha FC5 foot switch as an alternative), you can use the Interactive Recording function on Cubase. The Interactive Recording function provides easy and quick recording.

■ Controlling Cubase

The AI KNOB can control a desired parameter within the principal window and plug-in software on Cubase, specified via the mouse pointer.

Package Contents

The CI2 package contains the following items. After opening the CI2 package, make sure that it includes all of the items listed below.

- CI2
- CI2 Operation Manual (this book)
- USB Cable
- TOOLS for CI2 CD-ROM
- Cubase AI DVD-ROM

For the most recent information about the CI2, refer to the following Steinberg website.
<http://www.steinberg.net/>

About the Included Disks

Disk Contents

Each of the included disks contains the following software (driver).

TOOLS for CI2 CD-ROM

- TOOLS for CI2

Cubase AI DVD-ROM

- Cubase AI

Special Notices

- Steinberg and Yamaha make no representations or warranties with regard to any problems while attempting to copy the disks or software and cannot be held responsible for the results of attempts to copy the data.
- These disks are NOT for audio/visual purposes. Do not attempt to play the disks on a CD/DVD player. Doing so may result in irreparable damage to your audio CD/DVD player.
- The software (Yamaha Steinberg USB Driver, Steinberg CI2 Extension) included in the TOOLS for CI2 and the copyrights thereof are under exclusive ownership by Yamaha.
- The software included in the Cubase AI DVD-ROM and the copyrights thereof are under exclusive ownership by Steinberg Media Technologies GmbH.
- Copying/reproduction of the software in whole or in part by any means is expressly forbidden without the written consent of the manufacturer.
- For the latest information of the software contained in the accessory disk, please see the website below:
Future upgrades of application and system software and any changes in specifications announced separately on the website.
http://service.steinberg.de/goto.nsf/show/supportupdates_ci2_gb

About the power supply

Power supply

The power of the CI2 is supplied only from the computer via a USB cable. A power cable is not necessary.

Precautions when using the USB connector

Be sure to observe the following points when connecting to the computer's USB interface. Failing to do so may result in the computer freezing or shutting down, as well as corruption or even loss of data. If the device or computer does freeze, restart the application or computer.



- Be sure to wake the computer from sleep/suspended/standby mode before making a connection to the computer's USB connector.
- Always quit all applications running on the computer before connecting or disconnecting the USB cable.
- When connecting or disconnecting the USB cable, be sure to set the MASTER control to the minimum.
- Wait at least 6 seconds between connecting or disconnecting the USB cable.

Software Installation

To use the CI2 you must first install the software on the computer. This section explains the software installation. Install Cubase AI before you install TOOLS for CI2.

NOTE

- Before installing the software, confirm the latest information (e.g., OS compatibility, software update, etc.) on the following Steinberg website.
<http://www.steinberg.net/en/support.html>
- If you have already installed a version of Cubase that is compatible with operation with the CI2 (page 14), the instructions on installing Cubase AI described below are not necessary. Jump to the next section "Installing TOOLS for CI2."

Installing Cubase AI

NOTE

- You are only permitted to use this software pursuant to the terms and conditions of the "Steinberg Software End User License Agreement (EULA)" shown during the installation.
- In order to have continuous use of Cubase AI, including support and other benefits, you will need to register the software and activate your software license by starting it while the computer is connected to the Internet. Click the "Register Now" button shown when the software is started, then fill in all required fields for registration. If you do not register the software, you will be unable to use it after a limited period of time expires.

1. **Start the computer and log on to the Administrator account.**
2. **Insert the Cubase AI DVD-ROM into the DVD-ROM drive.**
3. **When the "WELCOME TO CUBASE AI" window appears, choose your preferred language by clicking on the corresponding national flag icon.**

NOTE

If this window does not appear automatically, open the DVD-ROM then double-click the file "Start Center."

4. **Follow the onscreen instructions to install the software.**

Installing TOOLS for CI2

TOOLS for CI2 consists of two software components: Yamaha Steinberg USB Driver and Steinberg CI2 Extension. Yamaha Steinberg USB Driver enables communication between the CI2 and your computer. Using Steinberg CI2 Extension, you can link the CI2 with a Cubase version which supports the Link functions between both of them (page 14). The TOOLS for CI2 Installer installs these two software components. Follow the instructions below to install the components.

NOTE

You are only permitted to use this software pursuant to the terms and conditions of the "License Agreement" shown during the installation.

Windows:page 9

Mac OS X: page 11

Windows

Preparing to install 1

1. **Disconnect all the devices other than the mouse and keyboard from the computer.**
2. **Start the computer and log on to the Administrator account.**
Exit any open applications and close all open windows.

Preparing to install 2 (Windows XP only)

For Windows Vista/Windows 7 users, this setting is not necessary. Go on to step 6.

3. **Select [Start] → ([Settings] →) [Control Panel], click “Switch to Classic View” in the upper left of the window.**

NOTE 

After completing the installation, make sure to restore the original settings if necessary.

4. **Go to [System] → [Hardware] → [Driver Signing] → [Driver Signing Options], and select the radio button to the left of “Ignore – Install the software anyway and don't ask for my approval” and click [OK].**

NOTE 

After completing the installation, make sure to restore the original settings if necessary.

5. **Close the System Properties window and Control Panel by clicking [OK] or the Close button ([X]) of the windows.**

Installation

6. **Insert the TOOLS for CI2 CD-ROM into the CD-ROM drive.**

7. **Open the CD-ROM, then double-click the file “setup.exe.”**

A “Welcome to the InstallShield Wizard for TOOLS for CI2” window appears.

(Windows Vista/Windows 7) If the “User Account Control” window appears, click [Continue] or [Yes].

8. **Click [Next] to start the installation.**

To cancel the installation, click [Cancel].

9. **When a message appears indicating that the software has been installed, click [Finish].**

10. **When a window appears requiring you to restart your computer, follow the on-screen instructions to restart the computer.**

11. **Connect the CI2 directly to the computer (without using a hub) by using the included USB cable.**

Initial settings of driver (Windows XP only)

For Windows Vista/Windows 7 users, the initial settings of the driver are set automatically. Go on to step 15.

12. The “Found New Hardware Wizard” window appears.

Some computers may take a while to display the window.

A dialog box may appear asking you whether you wish to connect to Windows Update. In this case, select the radio button to the left of “Not at this time,” then click [Next].

13. Select the radio button next to “Install the software automatically” then click [Next].

If a message “The software you are installing has not passed Windows Logo Testing” appears, click [Continue Anyway]. You do not need to abort the installation.

14. When a message appears indicating that the installation has been completed, click [Finish].

Confirming the installation

15. Select [Control Panel] from the Start menu.

16. Open the Device Manager window as follows.

(Windows Vista/Windows 7)

Select [Hardware and Sound], then click [Device Manager].

If the “User Account Control” window appears, click [Continue] or [Yes].

(Windows XP)

Double-click on the System icon to call up the System Properties window, then select the Hardware tab and click [Device Manager].

17. Click on the [+] mark or [>] mark next to “Sound, video and game controllers,” and confirm that “Steinberg CI2” is listed.

The installation is now complete.

Mac OS X

Installation

1. Disconnect all the devices other than the mouse and keyboard from the computer.
2. Insert the TOOLS for CI2 CD-ROM into the CD-ROM drive of your computer.
3. Open the CD-ROM, then double-click the file "TOOLS for CI2.mpkg."
4. Follow the onscreen instructions to install the software.
5. When installation has been completed, click [Restart] to restart the computer.
6. Connect the CI2 directly to the computer (without using a hub) by using the included USB cable.

Confirming the installation

7. From the hard disk to which the OS is installed (usually Macintosh HD), click [Applications] → [Utilities], then double-click [Audio MIDI Setup].

Mac OS X 10.5:

The "Audio MIDI Setup" window appears.

Mac OS X 10.6/Mac OS X 10.7:

The "Audio Devices" window appears.

8. Confirm that the device name (Steinberg CI2) is listed in the window opened in step 7.

Mac OS X 10.5:

In "Properties For:" of "Audio Devices"

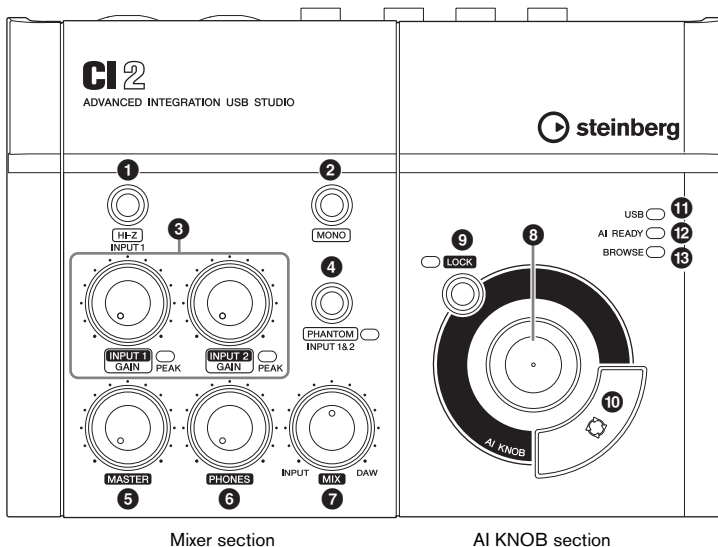
Mac OS X 10.6/Mac OS X 10.7:

In the left column

The installation is now complete.

The Controls and Connectors

Front Panel



Mixer section

1 [HI-Z INPUT 1] button

This button switches the HI-Z on (☐) / off (■) for the analog input jack 1. When directly connecting an electric guitar or electric bass that has passive pickups and no built-in preamp to the analog input jack 1, turn the [HI-Z] button on.

NOTE

- Use an unbalanced phone cable when you connect an electric guitar or electric bass and turn the [HI-Z] button on. If you use a balanced cable or an XLR cable in such a case, this instrument will not work correctly.
- If a device is not connected to analog input jack 1, turn this button off. Otherwise noise may occur.

2 [MONO] button

This button allows analog input jacks 1 and 2 to be used either as separate mono channels or as a stereo pair. When the button is on (☐), analog input jacks 1 and 2 function as independent mono channels feeding both the L and R LINE OUT jacks. It is used to monitor the sound of the microphone or guitar connected to the analog input jack 1 in the center of the monitor speaker. When the button is off (■), analog input jack 1 and 2 function as a stereo pair: the analog input jack 1 signal feeds the L LINE OUT jack and the analog input jack 2 signal feeds the R LINE OUT jack. Switching this button on/off does not affect the signal sent to the computer.

③ INPUT 1/2 GAIN controls/PEAK Indicator

Adjusts the input signal level. The signal that has passed through the GAIN control will be sent to the computer. To achieve the best balance of the recording level between S/N ratio and dynamic range, adjust the level so that the PEAK Indicator lights only occasionally and briefly on the highest input transients.

④ [PHANTOM INPUT 1&2] button/Indicator

This button switches the phantom power (+48V) on (☐)/off (■). If you turn the button on, the CI2 supplies phantom power to the analog input jack 1 and 2 (XLR-type). The indicator lights when the button is turned on. Turn this button on when using a phantom-powered condenser microphone.



CAUTION

- Make sure that phantom power is turned OFF unless it is needed.
- When turning phantom power ON, make sure that no equipment other than phantom-powered devices such as condenser microphones are connected. Devices other than condenser microphones may be damaged if connected to the phantom power supply. Note, however, that the switch may be left on when connecting to balanced dynamic microphones. When connecting an unbalanced device to the analog input jacks (1/4" phone type) and phantom power is turned on, hum or noise may result; this is not a malfunction or failure in the device.
- Do not connect or disconnect a device while phantom power is applied. Doing so can damage the connected device and/or the unit itself.
- To protect your speaker system, leave the monitor speakers (powered speakers) turned off when switching the phantom power on/off. It's also a good idea turn all master control and output volume controls down to minimum. Neglect of these precautions may result in large noise bursts that may damage your equipment, your ears, or both.

⑤ MASTER control

Adjusts the signal level sent to the LINE OUT jacks. This allows you to adjust the overall volume without changing the relative volume balance among the channels. This control does not affect the signal sent to the computer.

⑥ PHONES control

Adjusts the signal level sent to the PHONES jack, since this output signal is not affected by the MASTER control.

⑦ MIX control (INPUT—DAW)

Adjusts the signal level balance between the signal from the analog input jacks and the signal from an application software, such as DAW. This control does not affect the signal sent to the computer.

AI KNOB section

The functions of the **8** AI KNOB, **9** [LOCK] button, and **10** [Action Pad] button differ according to the mode, Normal or Browse. Normal mode is the conventional mode. In Browse mode, you can use the button **8** AI KNOB, **9** [LOCK] button and **10** [Action Pad] button to navigate through Cubase windows, e.g. the Browse Sounds dialog. Below are explanations of the function in Normal mode. Refer to "The functions of AI KNOB section in the Normal mode and the Browse mode" on page 15 for explanations of the function in the Browse mode.

8 AI KNOB

Turning the AI KNOB

This multi-function knob can control a desired parameter within the principal window and plug-in software in Cubase, specified via the mouse pointer.

Pressing the AI KNOB

Opens certain windows in Cubase, such as the Browse Sounds window (while entering Browse mode in this case). For details, refer to the following table.

The status of Cubase	Window to be opened
Project has not been opened yet	Project Assistant
Project is opened	Browse Sounds window
Opening an active VST/VSTi plug-in window	Search & Viewer
Opening an Interactive Recording panel	Preset pop-up list

9 [LOCK] button/Indicator

You can "lock" the parameter to be edited via the AI KNOB by turning this button on. When you locate the mouse pointer to the desired parameter then turn the [LOCK] button on, the AI KNOB will control the "locked" parameter regardless of the mouse pointer's position. The [LOCK] indicator lights while the parameter is

locked. By turning the [LOCK] button off, you can unlock the parameter to be edited and the AI KNOB can then be used to edit another parameter to which the mouse pointer is located.

10 [Action Pad] button

This button is used for an Interactive Recording function on Cubase. When this button is pressed, the Interactive Recording panel is shown. If the display is already shown, pressing the button performs the registered functions in order. Two to six functions can be registered on the Interactive Recording panel.

11 USB Indicator

This indicator shows the communication state of CI2 and computer. The indicator lights when the CI2 is connected to the computer via a USB cable and communication with the computer is enabled.

12 AI READY Indicator

This indicator shows the communication state of CI2 and Cubase. The indicator lights when the Link functions are available.

IMPORTANT

To use the Link function between the CI2 and Cubase, you will need to install Cubase/Cubase AI version 5.1 or higher. For details, refer to the following website.
http://service.steinberg.de/goto.nsf/show/supportupdates_ci2_gb

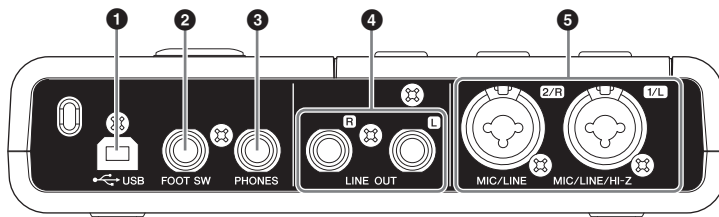
13 BROWSE Indicator

This indicator lights when a window in Cubase is opened, such as the Browse Sounds. The indicator lights in the Browse mode. It does not light in the Normal mode.

The functions of AI KNOB section in the Normal mode and the Browse mode

	Normal mode	BROWSE off BROWSE <input type="radio"/>	Browse mode	BROWSE on BROWSE <input checked="" type="radio"/>
Turning the AI KNOB	This multi-function knob can control a desired parameter within the principal window and plug-in software in Cubase, specified via the mouse pointer.		Moves the cursor. Turning the AI KNOB while holding down the [Action Pad] button lets you move the cursor to the next column (only for window having two or more columns).	
Pressing the AI KNOB	Opens certain windows in Cubase, such as the Browse Sounds window (while entering Browse mode in this case). See page 14 for details.		Turns the selected item on/off (only for window in which two or more items can be selected) or sets the selected item.	
Pressing the [LOCK] button	You can "lock" the parameter to be edited via the AI KNOB by turning this button on. See page 14 for details.		Cancels the selected item and closes the window (returns to Normal mode). Holding down for two seconds or longer cancels all of the selected items (only for window in which two or more items can be selected).	
Pressing the [Action Pad] button (pressing the foot switch)	This button is used for an Interactive Recording function on Cubase. See page 14 for details.		Moves the cursor to the next column (only for window having two or more columns).	

Rear Panel



1 USB terminal

This terminal is used to connect the CI2 and the computer by using the included USB cable.

2 FOOT SW jack

Connect an optional Yamaha FC5 foot switch to this jack. The connected foot switch operates the same as the [Action Pad] button.

3 PHONES jack

A pair of headphones can be plugged in here. This jack outputs the mixed signal from the analog input jacks and the signal from a DAW or other audio software. The output level can be adjusted using the PHONES control. This output signal is not affected by the MASTER control.

4 LINE OUT jacks L/R

These jacks would typically be connected to monitor speakers (powered speakers). These jacks output the mixed signal from the analog input jacks and the signal from a DAW or other audio software. The output level can be adjusted using the MASTER control.

NOTE

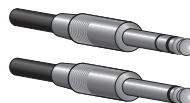
The volume balance between the analog input signal and the application software like DAW output signal can be adjusted using the MIX control.

5 MIC/LINE/Hi-Z jack 1/L (analog input jack 1)/ MIC/LINE jack 2/R (analog input jack 2)

Microphones and instruments such as guitars can be connected here using XLR or phone jack cables. The signal received by these jacks is sent to the LINE OUT jacks and computer.




XLR-type



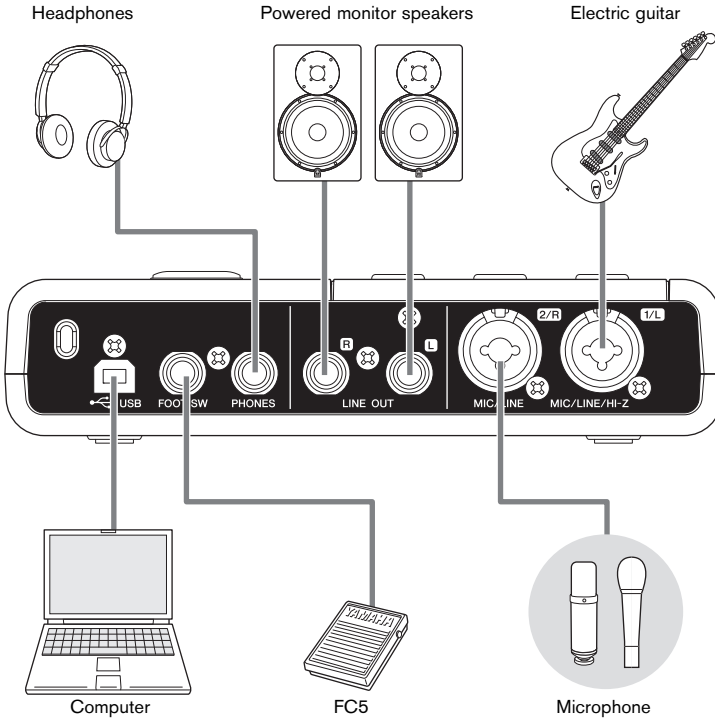
Phone-type
(1/4" TS or 1/4" TRS)

NOTE

You can directly connect an electric guitar or electric bass without the need for a separate DI box or amp simulator to analog input jack 1. In this case, turn on () the [HI-Z] button on the front panel. Make sure to use an unbalanced phone cable when you connect an electric guitar or electric bass. If you use a balanced cable, it will not work correctly.

Connecting to an External Device

Connection Examples



Options

Foot switch

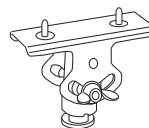
A Yamaha FC5 foot switch can be connected to the FOOT SW jack. The connected foot switch operates the same as the [Action Pad] button.



FC5

Microphone stand adaptor

A Yamaha BMS-10A microphone stand adaptor can be attached to the underside of the CI2. The CI2 attached with the microphone stand adaptor can then be used with a conventional microphone stand.



BMS-10A

Try it out

This section provides information on how to record and edit with Cubase. While going through this section you might find it useful to also refer to the “Controls and Functions” section, as well as the PDF documentation supplied with Cubase AI (Getting Started and Operation Manual, opened from the “Help” menu).

Preparing for using the CI2 with Cubase

You can make the configuration as follows.

1. Exit Cubase if it has already been started.

Cubase cannot recognize the CI2 if you connect the CI2 to the computer after starting Cubase. Make sure to start Cubase only after connecting the CI2 to the computer.

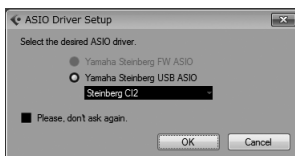
2. Connect the CI2 to the computer by using a USB cable.

IMPORTANT

(Windows only) Make sure to use the same USB terminal as the one used in the installation procedure when you connect the CI2 to the computer again. If you connect the USB cable to a different terminal, you will have to install the Yamaha Steinberg USB Driver again.

3. Start Cubase on your computer.

If the following dialog box is displayed while Cubase is starting, click [OK].



- When the Project Assistant window is displayed, move the cursor to “Recording” by turning the AI KNOB of the CI2, then press the [Action Pad] button of the CI2.

NOTE

Pressing the [Action Pad] button moves the focus which can be operated by the AI KNOB to the next column or pane.

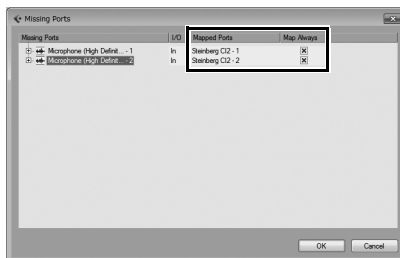
- Move the cursor to the desired project template by turning the AI KNOB, then press the AI KNOB.

A project window will appear.

NOTE

- If you selected the “Prompt for project location” in the Project Assistant window, the “Set Project Folder” window will appear. Select a project folder by using the mouse, then click [OK].
- The AI READY indicator on the front panel lights, indicating that the computer recognizes the CI2 and the Link functions between the CI2 and Cubase are available.

- In case the “Missing Ports” window appears. Select the port for each “Mapped Ports” and enter a checkmark for “Map Always,” then click [OK].



NOTE

If you enter a checkmark for “Map Always,” the “Missing Ports” window will not appear from the next time.

Preparation for using the CI2 with Cubase is now complete.

Recording

With the [Action Pad] button (or an optional Yamaha FC5 foot switch as an alternative), you can use the Interactive Recording function on Cubase. The Interactive Recording function provides easy and quick recording. You can record your performance to Cubase with the Interactive Recording function by following the instructions below.

NOTE

Interactive Recording function works optimally when "Tapemachine Style" is selected in the "Auto Monitoring" setting in Cubase. Open the Cubase menu [File] (Windows)/[Cubase AI] (Mac) → [Preference] → [VST], then set the "Auto Monitoring" to "Tapemachine Style."

1. Connect external devices such as microphones and instruments to analog input jacks.



CAUTION

Before connecting external devices such as microphones and instruments, set the volume of external devices and monitor speakers (powered speakers) to the minimum. We also recommend that you set the MASTER control to the minimum and turn off (■) both the [HI-Z INPUT 1] button and [PHANTOM INPUT 1&2] button, to avoid risk of loud noises that could cause hearing loss or device damage.

2. Click in the track list (the area in which the track names are displayed) to select a track to record on.



3. Make sure the [Record Enable] button for the track to be recorded is turned on.

If the [Record Enable] button is off, click it to turn it on.

4. Play the instrument, and adjust the recording level with the CI2 GAIN controls.

To achieve the best balance of the recording level between S/N ratio and dynamic range, adjust the level so that the PEAK Indicator lights only occasionally and briefly on the highest input transients.

NOTE

- If the Clipping Indicator in the Transport panel on Cubase lights, lower the CI2 GAIN controls.
- The MIX control let you adjust the signal level balance between the signal from the analog input jacks and the signal from Cubase.

5. Press the [Action Pad] button.

The interactive Recording panel will appear.



NOTE

The connected optional Yamaha FC5 foot switch operates the same as the [Action Pad] button.

6. Press the [Action Pad] button.

Recording will begin since "Record" has been executed on the Interactive Recording panel.

7. Play the instrument.

NOTE

- You can abort the Interactive Recording function and close the Interactive Recording panel by pressing the [LOCK] button.
- You can return to step 6 to abort and retry the recording by holding down the [LOCK] button for two seconds or longer.

8. When you finish recording the track, press the [Action Pad] button.

Recording will stop since "Stop" has been executed on the Interactive Recording panel.

9. Press the [Action Pad] button.

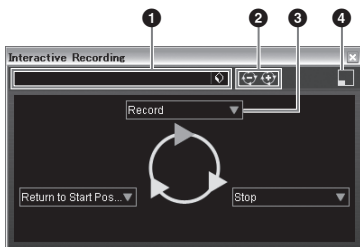
The project cursor will return to start position since "Return to Start Position" has been executed on the Interactive Recording panel.

To hear playback of the track you have just recorded, click the Transport panel [Play] button.

Recording operation is now complete.

TIP

You can also operate in the Interactive Recording panel as shown below.



- 1 Saves and loads the sequence of actions.
- 2 Increases and decreases the number of actions. The available number of actions is two through six.
- 3 Changes the action to another action.
- 4 Switches the panel to the small Interactive Recording panel. In the small panel, you can only load the sequence of actions.

TIP

Setting the audio driver buffer size

Noise produced when using applications such as DAW software can affect audio recording and/or playback. In most cases, you can solve these problems by adjusting the audio buffer size (Audio Buffer Size). The buffer size can usually be adjusted via the audio driver setup window in the application. (When using ASIO compatible software for Windows, the buffer size can be adjusted in the ASIO Buffer Size parameter via the Control Panel of the Yamaha Steinberg USB Driver.) While the higher buffer size reduces load to the computer CPU but produces latency (time lag) during recording/playback, the smaller buffer size may result in noise or the sound cutting off. Make sure to set the buffer size to an appropriate value depending on the performance of your computer, the number of audio/MIDI tracks being recorded/played back on the DAW software, the number of plug-in software, and so on.

Editing

The AI KNOB and [LOCK] button can be used to control Cubase. You can edit as follows.

AI KNOB

This multi-function knob can control a desired parameter within the principal window and plug-in software on Cubase, specified via the mouse pointer. In the following examples, we'll control the volume and panning parameter of the audio track on the mixer window.

1. Click [Mixer] from the [Devices] menu of Cubase.

Mixer window will appear.

2. Locate the mouse pointer to the volume or panning parameter of the audio track on the mixer window.

3. Turn the AI KNOB

The AI KNOB will control the parameter on which the mouse pointer is located.

NOTE

The assignable parameters to the AI KNOB are parameters that can be automated within the principal window and plug-in software on Cubase. Plug-in software compatible with the AI KNOB are the VST 3 plug-ins included with Cubase (as of November 2011). For the latest information about compatible plug-in software, refer to the following website:

http://service.steinberg.de/goto.nsf/show/supportupdates_ci2_gb

[LOCK] button

The [LOCK] button can “lock” the parameter to be edited via the AI KNOB. You can lock the parameter as follows.

1. Locate the mouse pointer to the desired parameter then turn the [LOCK] button on.

[LOCK] indicator will light.

2. Move the mouse pointer to the other location.

3. Turn the AI KNOB

The AI KNOB will control the “locked” parameter regardless of the mouse pointer's position. By turning the [LOCK] button off, you can unlock the parameter to be edited and the AI KNOB can then be used to edit another parameter to which the mouse pointer is located.

Editing operation is now complete.

Troubleshooting

The power of the device does not turn on.

- **Make sure that the CI2 is properly connected to the computer via a USB cable.**
The USB bus-power is necessary to use the CI2.
- **Confirm whether or not a proper USB cable is used.**
If the USB cable is broken or damaged, have the USB cable replaced with a known working one. Use a USB cable no longer than 1.5 meters.
- **Connect the CI2 to a computer without a USB hub.**

No sound.

- **Make sure that the MASTER/PHONES controls are set to the minimum.**
- **Are your speaker cables connected properly?**
Refer to "Connection Examples" on page 17.
- **Are your speaker cables shorted?**
- **Are the volume controls of your sources, audio devices, applications software, computer operating system, etc., set at appropriate levels?**
- **(Windows only) Is the output of your computer operating system muted?**
- **Do you have several applications running at the same time?**
Be sure to quit all applications you are not using.
- **Is the "ASIO Driver" setting on Cubase set properly?**
Make sure that the "Yamaha Steinberg USB ASIO (Windows)" or "Steinberg CI2 (Mac)" is selected on the "ASIO Driver" in the "VST Audio System" window (called up via [Device Setup...] under the [Devices] menu).

Noise occurs, or the sound is intermittent or distorted.

- **Is the PEAK indicator flashing red?**
You might have to lower GAIN control level to avoid distortion.
- **Does your computer satisfy the system requirements?**
Confirm the system requirements. For the latest information, see the Steinberg web site below.
<http://www.steinberg.net>
- **Is the buffer size setting of the Yamaha Steinberg USB Driver set properly?**
Refer to the "Setting the audio driver buffer size" on page 20.
- **Are any other applications, device drivers, or USB devices (scanners, printers, etc.) running at the same time?**
Be sure to quit all applications you are not using.
- **Are you playing back a large number of audio tracks?**
The number of tracks you can play at the same time will depend on the performance of the computer you are using. You may experience intermittent playback if you exceed your computer's capabilities.
- **Are you recording or playing long continuous sections of audio?**
The audio data processing capabilities of your computer will depend on a number of factors including CPU speed and access to external devices.
- **Is the network adaptor running?**
Disable the suspected network adaptor. Some network adaptors can cause noise.

Cubase does not recognize the CI2.

- **Make sure that the CI2 is properly connected to the computer via a USB cable.**
- **Confirm whether or not a proper USB cable is used.**
If the USB cable is broken or damaged, have the USB cable replaced with a known working one. Use a USB cable no longer than 1.5 meters.
- **Confirm whether or not the CI2 is connected to the computer before starting Cubase.**
- **Confirm whether or not the “Yamaha Steinberg USB Driver” and “Steinberg CI2 Extension” have been installed.**
If not, install them.
- **Confirm whether or not a version of Cubase that is compatible with operation with the CI2 (page 14) has already been installed.**
- **Make sure that CI2 is selected as the port setting on Cubase.**
The port is described in the Device Setup window (called up via [Device Setup...] under the [Devices] menu) when selecting “Steinberg CI2” under “Remote Devices” in the Devices box.
- **Confirm whether or not the Remote Control settings on Cubase are proper.**
Refer to the PDF manual (open from the “Help” menu) supplied with the Cubase AI software.
- **Make sure that there is no check mark in “In ‘All MIDI Inputs’” for CI2 MIDI port on the “MIDI Port Setup” window (called up via [Device Setup...] under the [Devices] menu.)**

- **(Cubase version 5 only) Are you connecting the Steinberg CC121 and the CI2 simultaneously with one computer?**

If you are connecting the Steinberg CC121 and the CI2 simultaneously with one computer, the AI KNOB, [LOCK] button and [Action Pad] button on the CI2 cannot be used.

Uninstalling the TOOLS for CI2

To uninstall TOOLS for CI2, you must remove the following two software components.

- Yamaha Steinberg USB Driver
- Steinberg CI2 Extension

Windows

- 1. Disconnect all other USB devices except mouse and keyboard from the computer.**

- 2. Log on to the Administrator account.**

Exit any open applications and close all open windows.

- 3. Open the window for the uninstall operation as follows.**

(Windows Vista/Windows 7)

From the Start menu, select [Control Panel] → [Uninstall a Program] to call up the “Uninstall or change a program” panel.

(Windows XP)

From the Start menu, select ([Settings] → [Control Panel] → [Add or Remove Programs] to display the Add or Remove Programs panel. Click “Change or Remove Programs” located in the upper left.

- 4. Select “Yamaha Steinberg USB Driver,” “Steinberg CI2 Extension” from the list.**

- 5. Uninstall them as follows.**

(Windows Vista/Windows 7)

Click the [Uninstall]/[Uninstall/Change].

If the “User Account Control” window appears, click [Continue] or [Yes].

Follow the on-screen instructions to remove the software.

(Windows XP)

Click [Change/Remove]/[Remove].

Follow the on-screen instructions to remove the software.

Mac OS X

Remove the following files from the boot disk (generally Macintosh HD.)

NOTE

If the folders described below are not displayed in the Finder, select [Go to Folder...] under the [Go] menu of the Finder, input the folder locations, and then click [Go].

Removing Yamaha Steinberg USB Driver

```

/System/Library/Extensions
    YamahaSteinbergUSBAudio.kext
/Applications/Yamaha/USBDriver/
    Yamaha Steinberg USB Control Panel.app
/Library/PreferencePanes/
    Yamaha Steinberg USB.prefPane
/Library/Preferences/
    com.yamaha.YamahaSteinbergUSBDriver.plist
/Library/Audio/MIDI Drivers/
    YamahaSteinbergUSBMIDI.plugin
/Library/Audio/MIDI Devices/Yamaha/Images/
    USB_1500.tiff
    USB_1502.tiff
    USB_1503.tiff
    USB_1506.tiff
    USB_1507.tiff
/Library/Receipts/
    YamahaSteinbergUSBAudioDriver.pkg
    YamahaSteinbergUSBControlPanel.pkg
    YamahaSteinbergUSBDriverplist.pkg
    YamahaSteinbergUSBMIDIPlugIn.pkg
    YamahaSteinbergUSBMIDIIcon.pkg
    YamahaSteinbergUSBPrefPane.pkg

```


Removing Steinberg CI2 Extension

/Library/Application Support/Steinberg/Components/
ci2_extension_u.bundle

/Library/Application Support/Yamaha/
InteractiveRecording

/Library/Receipts/
Steinberg CI2 Extension.pkg

Appendix

Input and Output Specifications

Analog Input	Type	Input Level		
		Nominal Level	Maximum Level	Input Impedance
MIC 1/L, 2/R	XLR type, balanced +48V Phantom powered	-60dBu — -16dBu	-6dBu	3k Ω
HI-Z 1/L	Phone type, unbalanced	-44dBu — 0dBu	+10dBu	500k Ω
LINE 1/L, 2/R	TRS phone type, balanced	-34dBu — +10dBu	+20dBu	62k Ω

Analog Output	Type	Output Level		
		Nominal Level	Maximum Level	Input Impedance
LINE OUT L, R	TRS phone type, impedance balanced	+4dBu	+10dBu	10k Ω
PHONES	TRS phone type, stereo	3.6mW	6.0mW	40 Ω

General Specifications

USB terminal	USB1.1, 44.1/48 kHz, 24 bit, bus-powered
Dimensions (W x H x D)	W190 x H45.4 x D134.5 mm
Net Weight	720 g
Included Accessories	<ul style="list-style-type: none"> ▪ Cubase AI DVD-ROM ▪ TOOLS for CI2 CD-ROM ▪ USB cable ▪ Operation Manual

Specifications and descriptions in this manual are for information purposes only. Steinberg/Yamaha Corp. reserves the right to change or modify products or specifications at any time without prior notice. Since specifications, equipment or options may not be the same in every locale, please check with your Steinberg/Yamaha dealer.

Information for Users on Collection and Disposal of Old Equipment



This symbol on the products, packaging, and/or accompanying documents means that used electrical and electronic products should not be mixed with general household waste.

For proper treatment, recovery and recycling of old products, please take them to applicable collection points, in accordance with your national legislation and the Directives 2002/96/EC.

By disposing of these products correctly, you will help to save valuable resources and prevent any potential negative effects on human health and the environment which could otherwise arise from inappropriate waste handling.

For more information about collection and recycling of old products, please contact your local municipality, your waste disposal service or the point of sale where you purchased the items.

[For business users in the European Union]

If you wish to discard electrical and electronic equipment, please contact your dealer or supplier for further information.

[Information on Disposal in other Countries outside the European Union]

This symbol is only valid in the European Union. If you wish to discard these items, please contact your local authorities or dealer and ask for the correct method of disposal.

Verbraucherinformation zur Sammlung und Entsorgung alter Elektrogeräte



Be findet sich dieses Symbol auf den Produkten, der Verpackung und/oder beiliegenden Unterlagen, so sollten benutzte elektrische Geräte nicht mit dem normalen Haushaltsabfall entsorgt werden.

In Übereinstimmung mit Ihren nationalen Bestimmungen und den Richtlinien 2002/96/EC bringen Sie alte Geräte bitte zur fachgerechten Entsorgung, Wiederaufbereitung und Wiederverwendung zu den entsprechenden Sammelstellen.

Durch die fachgerechte Entsorgung der Elektrogeräte helfen Sie, wertvolle Ressourcen zu schützen, und verhindern mögliche negative Auswirkungen auf die menschliche Gesundheit und die Umwelt, die andernfalls durch unsachgerechte Müllentsorgung auftreten könnten.

Für weitere Informationen zum Sammeln und Wiederaufbereiten alter Elektrogeräte kontaktieren Sie bitte Ihre örtliche Stadt- oder Gemeindeverwaltung, Ihren Abfallentsorgungsdienst oder die Verkaufsstelle der Artikel.

[Information für geschäftliche Anwender in der Europäischen Union]

Wenn Sie Elektrogeräte ausrangieren möchten, kontaktieren Sie bitte Ihren Händler oder Zulieferer für weitere Informationen.

[Entsorgungsinformation für Länder außerhalb der Europäischen Union]

Dieses Symbol gilt nur innerhalb der Europäischen Union. Wenn Sie solche Artikel ausrangieren möchten, kontaktieren Sie bitte Ihre örtlichen Behörden oder Ihren Händler und fragen Sie nach der sachgerechten Entsorgungsmethode.

Information concernant la Collecte et le Traitement des déchets d'équipements électriques et électroniques.



Le symbole sur les produits, l'emballage et/ou les documents joints signifie que les produits électriques ou électroniques usagés ne doivent pas être mélangés avec les déchets domestiques habituels.

Pour un traitement, une récupération et un recyclage appropriés des déchets d'équipements électriques et électroniques, veuillez les déposer aux points de collecte prévus à cet effet, conformément à la réglementation nationale et aux Directives 2002/96/EC.

En vous débarrassant correctement des déchets d'équipements électriques et électroniques, vous contribuerez à la sauvegarde de précieuses ressources et à la prévention de potentiels effets négatifs sur la santé humaine qui pourraient advenir lors d'un traitement inapproprié des déchets.

Pour plus d'informations à propos de la collecte et du recyclage des déchets d'équipements électriques et électroniques, veuillez contacter votre municipalité, votre service de traitement des déchets ou le point de vente où vous avez acheté les produits.

[Pour les professionnels dans l'Union Européenne]

Si vous souhaitez vous débarrasser des déchets d'équipements électriques et électroniques veuillez contacter votre vendeur ou fournisseur pour plus d'informations.

[Information sur le traitement dans d'autres pays en dehors de l'Union Européenne]

Ce symbole est seulement valable dans l'Union Européenne. Si vous souhaitez vous débarrasser de déchets d'équipements électriques et électroniques, veuillez contacter les autorités locales ou votre fournisseur et demander la méthode de traitement appropriée.

Información para Usuarios sobre Recolección y Disposición de Equipamiento Viejo



Este símbolo en los productos, embalaje, y/o documentación que se acompañe significa que los productos electrónicos y eléctricos usados no deben ser mezclados con desechos hogareños corrientes.

Para el tratamiento, recuperación y reciclado apropiado de los productos viejos, por favor llévelos a puntos de recolección aplicables, de acuerdo a su legislación nacional y las directivas 2002/96/EC.

Al disponer de estos productos correctamente, ayudará a ahorrar recursos valiosos y a prevenir cualquier potencial efecto negativo sobre la salud humana y el medio ambiente, el cual podría surgir de un inapropiado manejo de los desechos.

Para mayor información sobre recolección y reciclado de productos viejos, por favor contacte a su municipio local, su servicio de gestión de residuos o el punto de venta en el cual usted adquirió los artículos.

[Para usuarios de negocios en la Unión Europea]

Si usted desea deshacerse de equipamiento eléctrico y electrónico, por favor contacte a su vendedor o proveedor para mayor información.

[Información sobre la Disposición en otros países fuera de la Unión Europea]

Este símbolo sólo es válido en la Unión Europea. Si desea deshacerse de estos artículos, por favor contacte a sus autoridades locales y pregunte por el método correcto de disposición.

Informazioni per gli utenti sulla raccolta e lo smaltimento di vecchia attrezzatura



Questo simbolo sui prodotti, sull'imballaggio, e/o sui documenti che li accompagnano significa che i prodotti elettrici e elettroniche non dovrebbero essere mischiati con i rifiuti domestici generici.

Per il trattamento, recupero e riciclaggio appropriati di vecchi prodotti, li porti, prego, ai punti di raccolta appropriati, in accordo con la Sua legislazione nazionale e le direttive 2002/96/CE.

Smaltendo correttamente questi prodotti, Lei aiuterà a salvare risorse preziose e a prevenire alcuni potenziali effetti negativi sulla salute umana e l'ambiente, che altrimenti potrebbero sorgere dal trattamento improprio dei rifiuti.

Per ulteriori informazioni sulla raccolta e il riciclaggio di vecchi prodotti, prego contatti la Sua amministrazione comunale locale, il Suo servizio di smaltimento dei rifiuti o il punto vendita dove Lei ha acquistato gli articoli.

[Per utenti imprenditori dell'Unione europea]

Se Lei desidera disfarsi di attrezzatura elettrica ed elettronica, prego contatti il Suo rivenditore o fornitore per ulteriori informazioni.

[Informazioni sullo smaltimento negli altri Paesi al di fuori dell'Unione europea]

Questo simbolo è valido solamente nell'Unione europea. Se Lei desidera disfarsi di questi articoli, prego contatti le Sue autorità locali o il rivenditore e richieda la corretta modalità di smaltimento.

► **Warranty Terms and Conditions**

available as printable PDF file at
www.steinberg.net/warranty

The Warranty Terms and Conditions available as printed PDF file at www.steinberg.net/warranty apply only for countries of the European Economic Area (EEA) and Switzerland.

► **Gewährleistungsbestimmungen**

finden Sie als druckbare PDF Datei unter
www.steinberg.de/warranty

Die Gewährleistungsbestimmungen in Schriftform sind als PDF-Datei unter www.steinberg.de/warranty erhältlich und gelten nur für den Europäischen Wirtschaftsraum (EWR) und die Schweiz.

► **Les conditions de garantie**

se trouvent dans le document PDF
imprimable sous
www.steinberg.net/warranty

Les conditions de garantie disponibles au format PDF à la page www.steinberg.net/warranty s'appliquent uniquement aux pays de l'Espace économique européen (EEE) et à la Suisse.

► **Las condiciones de garantía**

se encuentran en el documento PDF en
www.steinberg.net/warranty

Los términos y condiciones de la garantía como archivo PDF para su impresión en www.steinberg.net/warranty sólo están disponible en países del Espacio Económico Europeo (EEE) y Suiza.

► **Termini e Condizioni di Garanzia**

disponibili su file PDF stampabile
all'indirizzo web
www.steinberg.net/warranty

I termini e le condizioni della garanzia, disponibili in formato PDF all'indirizzo www.steinberg.net/warranty, sono validi soltanto per i paesi dell'Area Economica Europea (EEA) e per la Svizzera.

If you need support or further product information please contact the distributor in your country.

A list of distributors is available at this website:

<http://www.steinberg.net/en/company/distributor.html>

For assistance in determining who to contact, please contact "Headquarter SMTG."

Wenn Sie Unterstützung oder weitere Produktinformationen benötigen, wenden Sie sich bitte an den Vertrieb in Ihrem Land.

Eine Liste der Vertriebspartner finden Sie auf dieser Website:

<http://www.steinberg.net/en/company/distributor.html>

Wenn Sie Hilfe benötigen, an wen Sie sich wenden sollten, kontaktieren Sie bitte „Headquarter SMTG“.

Pour toute demande d'assistance ou d'information supplémentaire sur les produits, veuillez contacter le distributeur agréé dans votre pays.

La liste des distributeurs agréés est disponible sur le site Web suivant :

<http://www.steinberg.net/en/company/distributor.html>

Pour obtenir de l'aide sur les ressources à contacter, adressez-vous au « Siège de SMTG ».

Para solicitar asistencia o más información sobre el producto, póngase en contacto con el distribuidor de su país.

Encontrará una lista de distribuidores en el siguiente sitio web:

<http://www.steinberg.net/en/company/distributor.html>

Para consultas sobre el contacto adecuado, diríjase a "Headquarter SMTG."

Per ottenere assistenza o avere ulteriori informazioni sul prodotto, contattare il distributore locale.

L'elenco dei distributori è disponibile sul sito Web al seguente indirizzo:

<http://www.steinberg.net/en/company/distributor.html>

Per individuare il distributore da contattare, rivolgersi alla sede centrale SMTG.

如需更多支持和深展F品信息，青联系您所在国家的代理商。代理商列表青测克下列网址：

<http://www.steinberg.net/en/company/distributor.html>

如需帮助决定联系脚方代理商，青联系 "SMTG 忌公司"。

HEAD OFFICE

Steinberg Media Technologies GmbH

Frankenstraße 18b, 20097 Hamburg, Germany

Tel: +49-(0)40-210 35 0

Steinberg Web Site
<http://www.steinberg.net>

C.S.G., Pro Audio Division
© 2009-2011 Yamaha Corporation
ZA68250 111MWGR*.*-01D0

